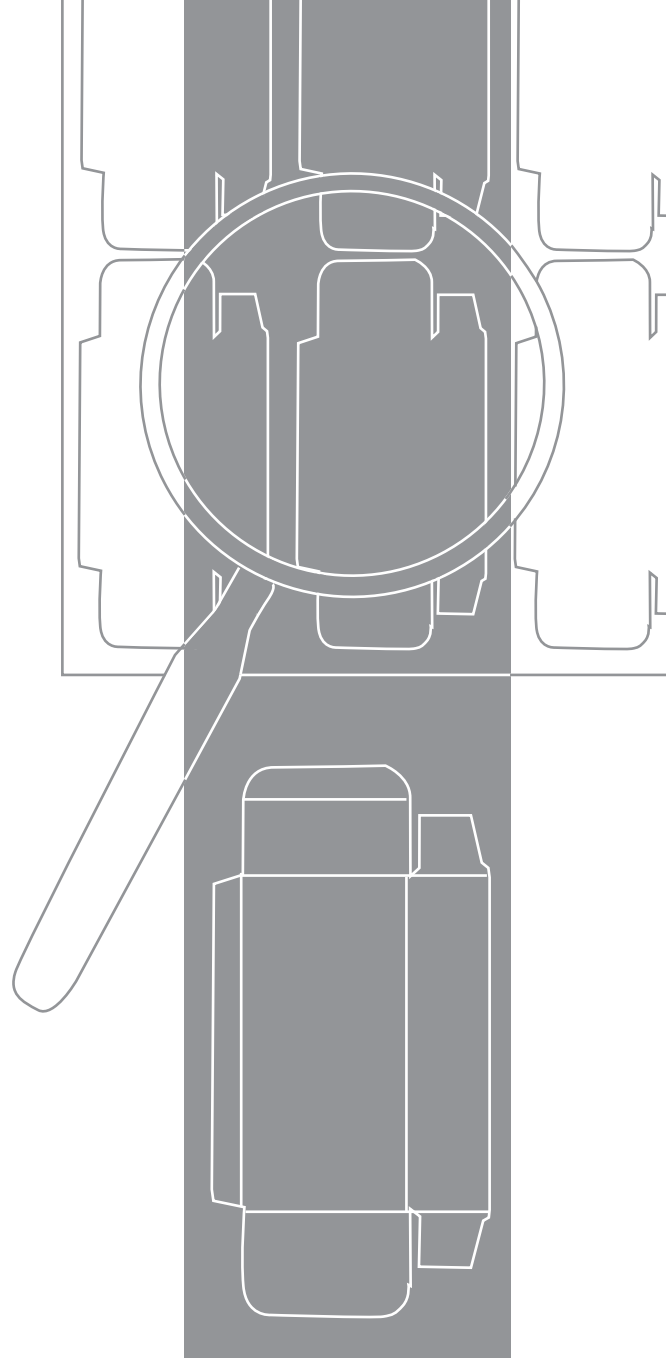




ANTARESVISION



PSC
PRINTING
SAMPLE
CHECK



PSC PRINTING SAMPLE CHECK

Printing Sample Check is the new system designed by Antares Vision to support the management of the printed samples in the packaging industry, from the original design to the mass printing of materials.

Based on a sophisticated software able to import and process the original PDF files, Printing Sample Check compares them with the physical printed samples, automatically detecting and outlining the differences.

Printing Sample Check works off-line acquiring images of the printed samples with a high quality certified scanner station. This ensures the most reliable performances with a fast scanning tool that can give impartial and reproducile results from sample-to-file comparison.

Advanced but very simple to use algorithms automatically align the master and the analyzed images, compensating the physiological deformation of the support and thus avoiding false mistakes.

Every mismatch, such as character types, colors, stretches, scratches, streaks or dots, is clearly outlined on the PC screen, thus easing the detection of the printing problem.

The report of comparison is immediately available in a file ready to be printed, stored or transferred to the quality system, saving hours of man-labour and improving control reliability and accuracy.

FEATURES AND BENEFITS

OFF-LINE OPERATION

- Interfaces with a supplied high speed certified scanner
- Wide range of scanner dimensional range (A1, A3, A4)
- File to file comparison
- Easy report printing and sharing of the results

TYPICAL APPLICATIONS

- Folding cartons
- Patient information leaflets
- Labels
- Foils

PRINTING TECHNOLOGIES

- Offset
- Flexographic
- Rotogravure
- Digital
- Screen printing

HIGH EFFICIENCY AND EASE OF USE

- A simple and fast procedure guides the operator along the main phases:
 - acquisition of the image
 - automatic verification against the master image (PDF and other graphic formats supported)
 - manual error validation
 - reporting
- Fast, impartial and reproducible results
- Simultaneous acquisition and verification on a batch queue
- Automatic alignment and comparison of the single master artwork with the multiple artworks printed in one sheet
- Virtually unlimited definition of areas with different tolerances (up to 5 levels) to concentrate control on the most critical areas
- Automatic cutting die detection
- Advanced reporting to help locating the error causes in the printing process (ie. clogging of individual nozzles, stains)

100% INSPECTION ACCURACY

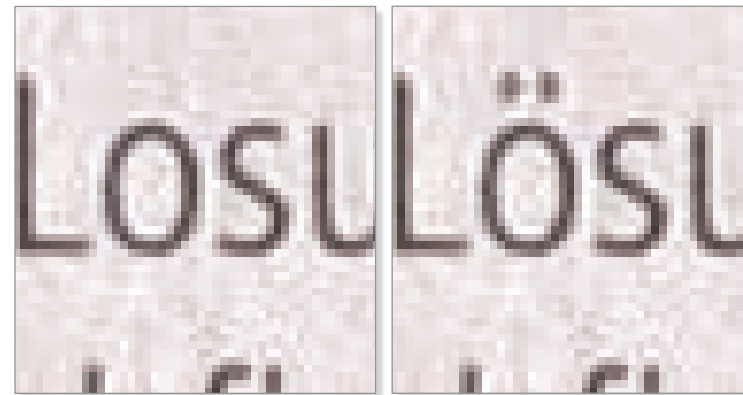
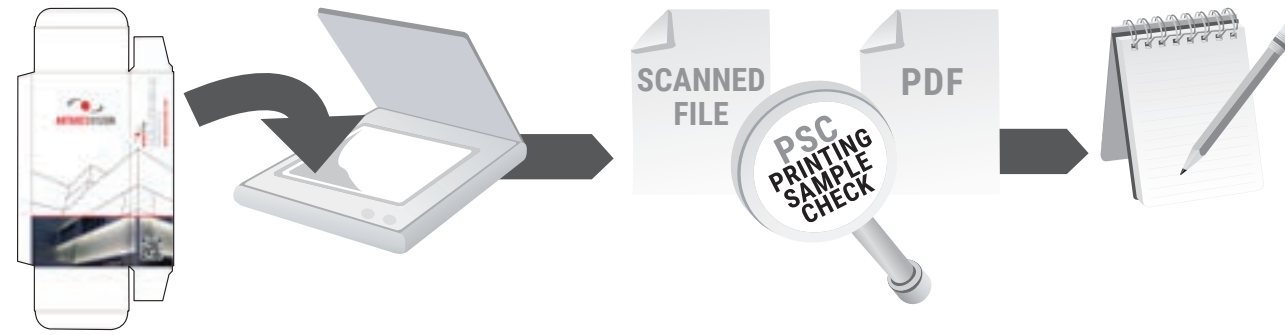
- Shape and color:
 - high precision inspection with all fonts: latin, arabic, chinese, korean or japanese.
 - missing parts of letters
 - missing, mismatched or different fonts
 - missing ink
 - poor printing
 - stains and smudges
 - stretches
 - scratches
 - streaks
 - spots
 - color difference (ΔE)
- Barcode inspection:
 - identification, inspection and decoding of 1D and 2D codes
 - Datamatrix grade evaluation

QUALITY AND VALIDATION

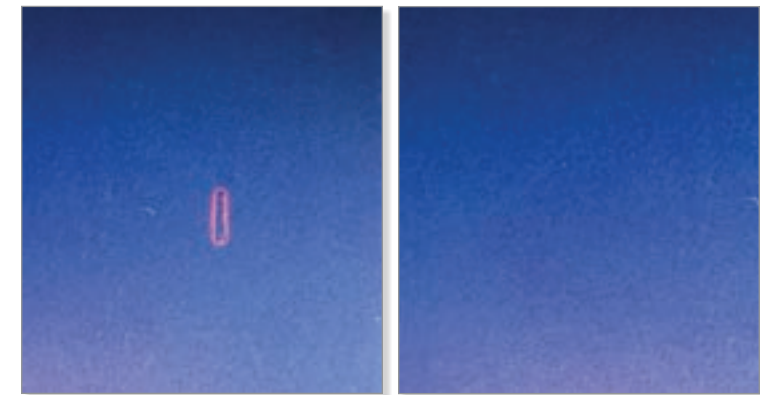
- Manages up to 5 user login levels.
- FDA 21 CFR part 11 and GMP Annex 11 compliant
- Developed following GAMP 5 approach
- Availability of all documentations involved in the GAMP approach.

PSC PRINTING SAMPLE CHECK WORKFLOW

PRINTED ARTWORK SCANNING FILE2FILE COMPARISON MISMATCHES REPORT



FONT PART MISSING



MISSING INK



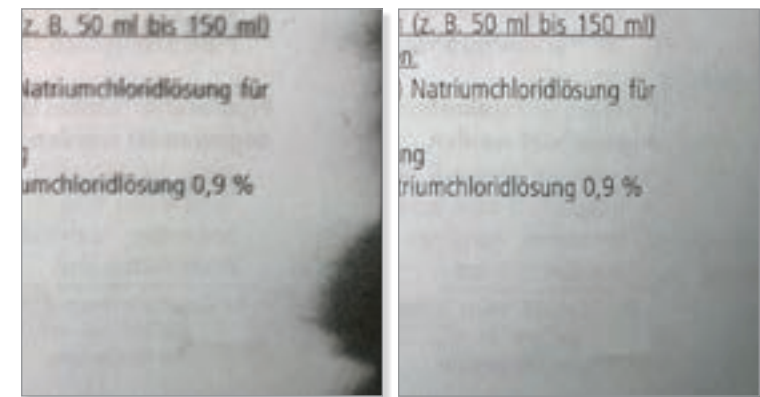
COLOR DEVIATION



DATAMATRIX MISSING DOTS



STREAK OF BLACK INK



GREASE STAIN

IS PERFECT FOR

CARTONS



LEAFLETS



LABELS



FOILS



TECHNICAL CHARACTERISTICS

HARDWARE STATION

Processor	Intel I7
RAM	4 GB
Operating System	Windows OS
Monitor resolution	1920x1080 (full HD)
Scanner	Certified A1, A3, A4

SOFTWARE FEATURES

Supported formats	PDF, TIFF, BMP, PNG
Self-learning procedure (wizard)	Yes
Minimum detectable defect (with 200 dpi resolution)	0,1mm
Minimum color deviation	10 ΔE (CIE 76, CIE 94)
Multi-language platform	Yes
Available languages	English, French, Italian, German, Spanish, other languages on request

DETECTABLE DEFECTS

Color deviations between PDF-reference and sample image	
Missing letters or parts of letters	
Slurred letters	
Slurred text passages	
Missing ink	
Stains and hickeys	
Defect in material / material variations	
Errors in placement	
Scratches, damages	
Lubrifications, ink dashes	
Barcode	Identification, inspection and decoding of 1D and 2D codes Datamatrix grade evaluation

SECURITY AND VALIDATION

User login levels	Configurable, up to 5 levels
FDA 21 CFR part 11 compliant	Yes
Development according to GAMP 5 rules	Yes

REMOTE ASSISTANCE

Remote support through Internet connection	Yes
Possibility to send to our assistance service the complete workflow steps to help solving the problem	Yes

